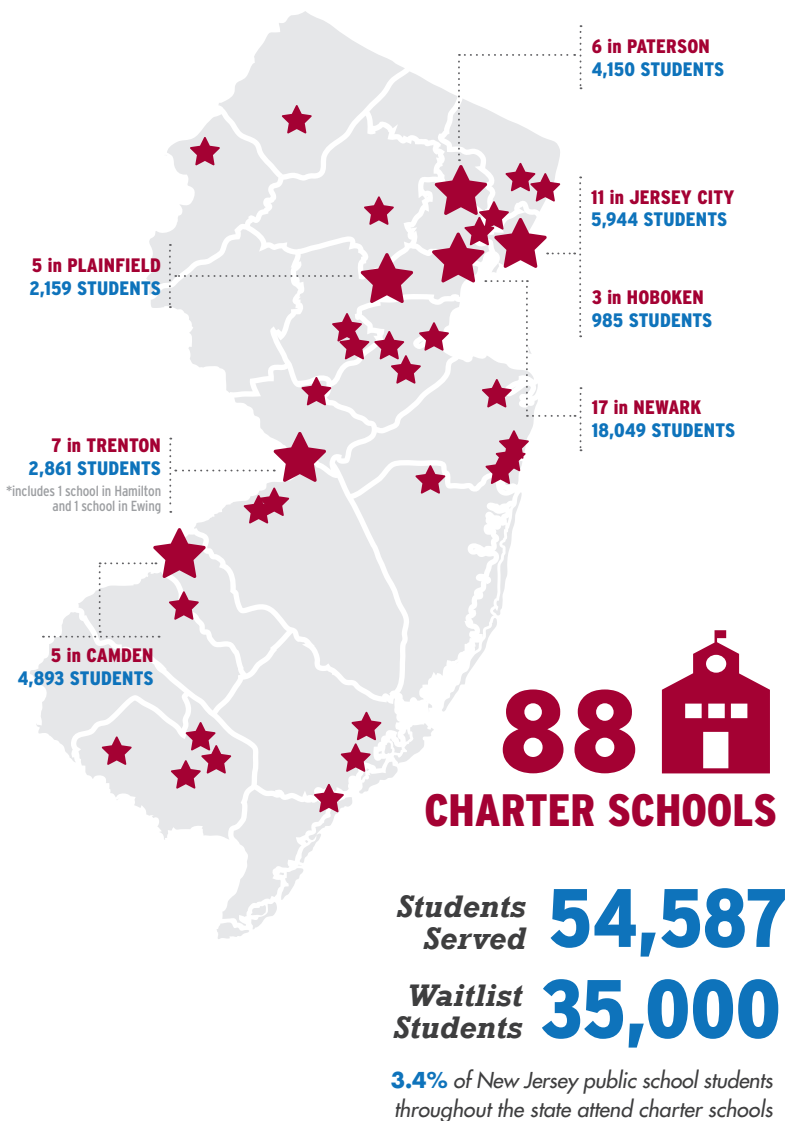


# NEW JERSEY CHARTER SCHOOL FACTS

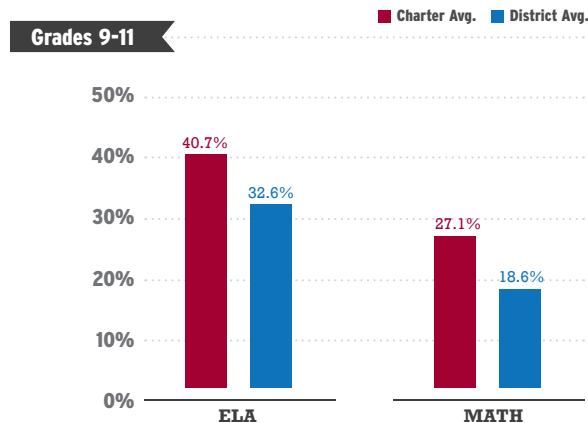
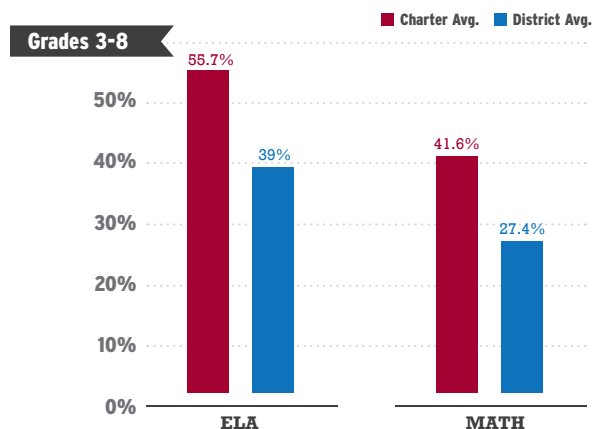
## ENROLLMENT



## PERFORMANCE

### CHARTER SCHOOLS CONTINUE TO OUTPERFORM COMPARATIVE DISTRICTS

2017-18 Overall Student Achievement (Proficiency Rates)



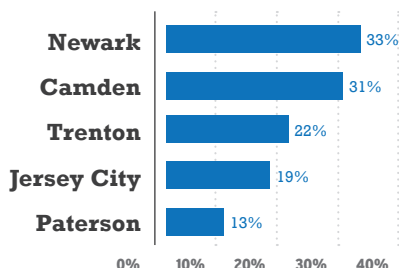
## IN THE 2017-18 SCHOOL YEAR...

# 81%

of charter schools are located in economically challenged\* communities.

\*At least 60% of students receive free or reduced price lunch.

Percentage of Public School Students Attending Charter Schools in Select Cities:



## GRADUATION RATES

# 89%

Charter schools are graduating 89% of students within four years compared to 82% in charter school comparative districts.

**COMPARATIVE DISTRICTS:** Each charter school is evaluated against the single district that is sending the highest percentage of students to the charter school. Statewide Comparative District data are obtained by aggregating data from the comparative districts of all charter schools and excluding charter school data within those districts.

## KEY DEMOGRAPHICS

**51%**  
Black

**34%**  
Hispanic

**72%**  
Economically  
Disadvantaged

**10%**  
Students with  
Disabilities

**4%**  
English Language  
Learners

## CHARTER SCHOOLS BY GRADES SERVED

**17**  
Elementary  
Schools

**38**  
K-8  
Schools

**18**  
K-12  
Schools

**6**  
Middle  
Schools

**8**  
High  
Schools

**2**  
Middle-High  
Schools  
(6-12)

## CHARTER SCHOOL PROGRAMS

- 11** schools are offering pre-K
- 9** schools focus on STEM or STEAM education
- 6** high schools offering college-level dual credit coursework
- 6** schools focus on environmental/sustainability education
- 4** schools have dual language programs
- 2** performing arts high schools
- 1** high school that serves over-age, under-credited students at risk of dropping out

## CHARTER SCHOOLS BY OPERATING STATUS

- 21** schools operating 20+ years
- 26** schools operating 10-19 years
- 25** schools operating 5-9 years
- 17** schools operating 1-4 years
- 21** schools have closed since 2010

## ACCESS AND EQUITY

- 46** charter schools (52%) have more than 10% of students with IEPs for Special Education
- 20+** charter schools are implementing weighted lotteries for at-risk students

## INEQUITABLE FUNDING

**73%**

On average, charter schools receive just 73% of per pupil funding compared to traditional districts.

**\$13 billion**

Since 2001, NJ has spent nearly \$13 billion on public school facilities in 555 school districts with \$0 going to public charter school facility projects.

- \$10.5 billion in facilities aid was expended by the Schools Development Authority (SDA) and its predecessor, the School Construction Corporation (SCC).
- \$2.4 billion was provided to traditional school districts in the form of Debt Service Aid.

## COLLECTIVE BARGAINING AGREEMENTS

- 16** NJ charter schools (18%) have collective bargaining agreements with NJEA or AFT

## PERCENTAGE OF STUDENTS SERVED IN INDEPENDENT VS. NETWORK-AFFILIATED SCHOOLS (CMOS AND EMOS)

